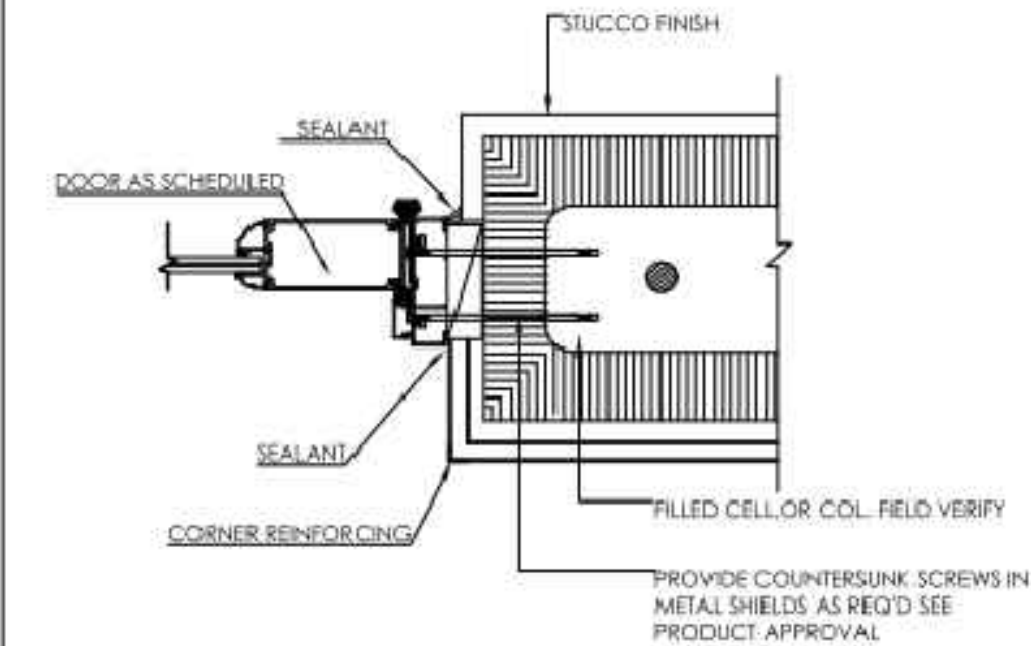
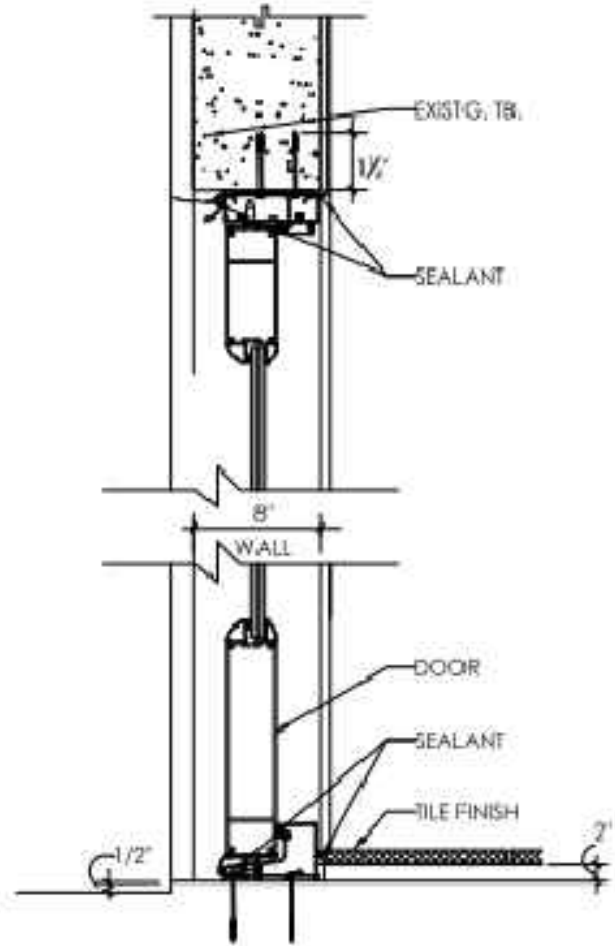


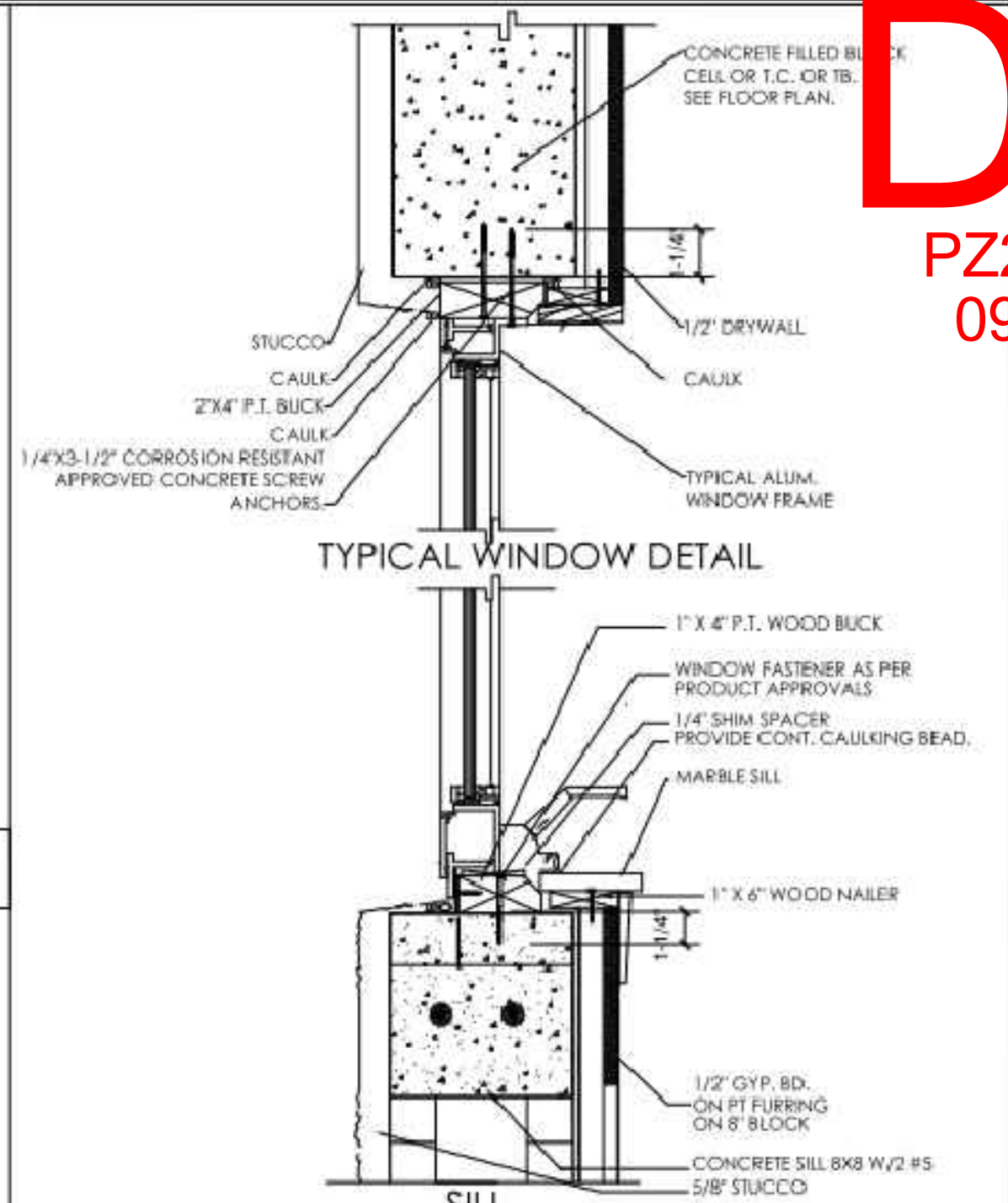
FLOOR FINISH SCHEDULE				
LEGEND	LABEL	LOCATION	DESCRIPTION	NOTES
	FF-01	KITCHEN, LIVING, DINING, BEDROOM	CERAMIC TILE	SEE FLOOR PLAN FINISH FOR LOCATIONS OF USE. INSTALL IN ACCORDANCE TO MANUFACTURER'S SPECIFICATIONS.
	FF-02	BATHROOMS	CERAMIC TILE	SEE FLOOR PLAN FINISH FOR LOCATIONS OF USE. INSTALL IN ACCORDANCE TO MANUFACTURER'S SPECIFICATIONS.
• ALL NEW SOUNDPROOF SHALL BE WHISPERMAT OR SIMILAR • ACOUSTICAL LINING TO COMPLY WITH FLORIDA BUILDING CODE 2017. • MINIMUM STC RATING PER FBC 2017 = 50 MUST BE PROVIDED.				



13 DOOR JAMB DETAIL
NTS



13 FRENCH DOOR DETAIL
NTS



- IF THE DESIGN PRESSURES IN THE WINDOW DOES NOT EXCEED 65 P.S.F., SECURE THE 2" WOOD BUCK TO THE STRUCTURE USING 1/4" X 3 1/4" CORROSION RESISTANCE APPROVED CONCRETE ANCHORS WITH A MINIMUM EMBEDMENT OF 1 1/4" @ 16" O.C. (6" FROM THE ENDS) ON 3000 P.S.I. CONCRETE AND @ 16" O.C. (6" FROM THE ENDS) ON ASTM C-90 CONCRETE BLOCKS OR SECURE THE WINDOW DIRECTLY TO THE STRUCTURE WITH 1/4"X3 1/4" CORROSION RESISTANT APPROVED CONCRETE ANCHORS WITH A MINIMUM EMBEDMENT OF 1 1/4" SPACED AS IT IS ON THE NOTICE OF ACCEPTANCE. A NOMINAL 1"X3" P.T. WOOD SPACER SHALL BE USED BETWEEN THE WINDOW AND THE STRUCTURE BUT THE EMBEDMENT IN THE CONCRETE BLOCK SHALL REMAIN TO BE 1 1/4" MIN.
- ALL 2"X WOOD BUCK END/OR 1"X3" WOOD SPACER SHALL BE PROPERLY CAULKED.
- REFER TO THE INSTALLATION INSTRUCTIONS FOR THE SPECIFIC PRODUCT BEING INSTALLED AND SHIM, LEVER, AND SQUARE TO ENSURE PROPER OPERATION.
- FILL VOID BETWEEN WINDOW AND WOOD BUCK WITH INSULATION, BEING CAREFUL NOT TO BOW WINDOW FRAME.
- APPLY A CONTINUOUS BEAD OF URETHANE SEALANT AROUND WINDOW. CHECK MANUFACT. RECOMMENDATIONS FOR SURFACE PREP, APPLICATION, AND INSTALLATION.

13 WINDOW AND DOOR BUCK DETAIL
NTS

DRC

PZ24-12000008
09/18/2024

A.A. #31187 - FL PE #74745
3445 Biscayne Blvd, Suite 210
North Miami Beach, FL 33160
TEL: (786) 916-6546
fax: (305) 848-9318
alioskar@ganemconsultingeng.com

KEYPLAN

Alioskar
Ganem
Osorio
Digitally signed by
Alioskar Ganem
Osorio
Date: 2024.06.14
11:45:48 -04'00'

CONSULTING ENGINEER



ALIOSKAR GANEM P.E.
FL LIC. No. 74745

ECO POMPANO TOWNHOME
DEVELOPMENT

3227 NE 5TH ST, POMPANO
BEACH, FL. 33062 UNIT 3

NOTES/COMMENTS

REVISIONS / SUBMISSIONS

DRAWN BY: AG
CHECKED BY: AG
INITIAL DRAWING
RELEASE DATE: ISSUE DATE

DETAILS